

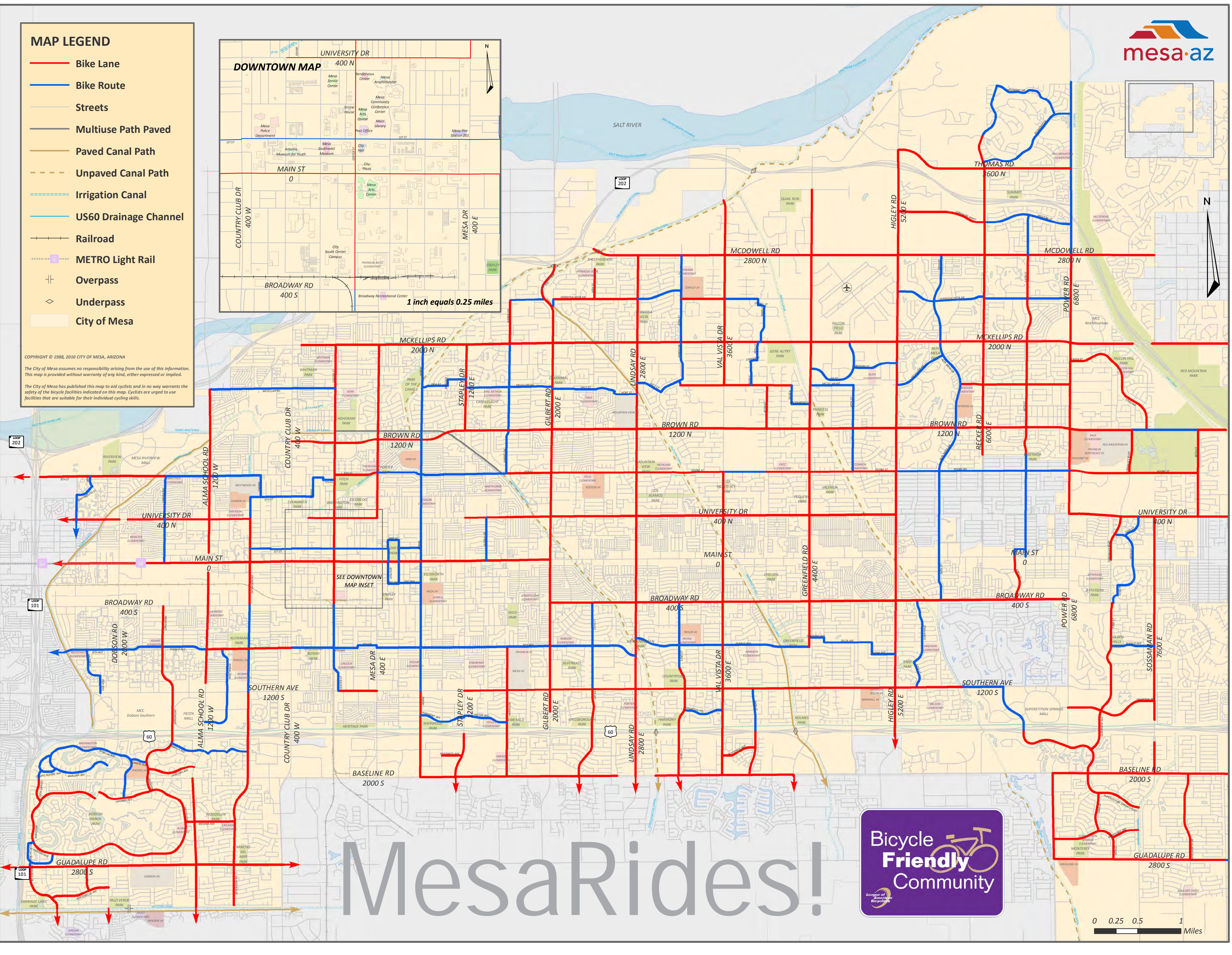
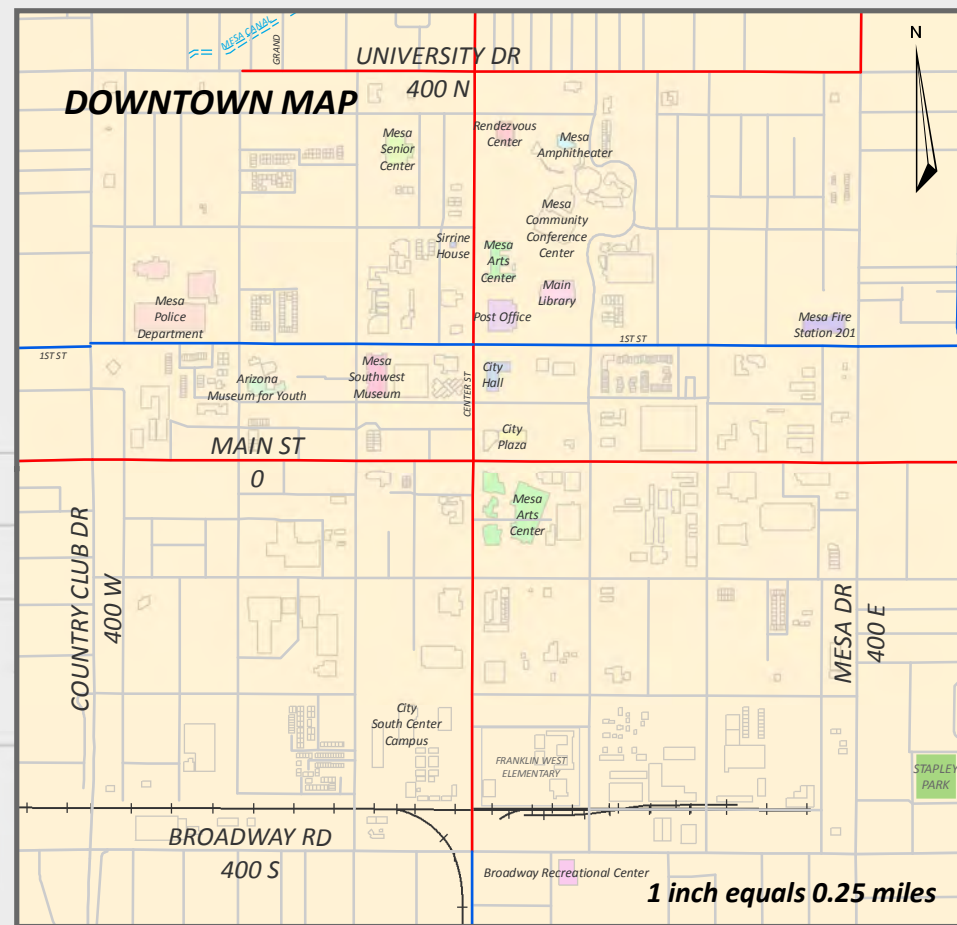
### MAP LEGEND

- Bike Lane
- Bike Route
- Streets
- Multiuse Path Paved
- Paved Canal Path
- Unpaved Canal Path
- Irrigation Canal
- US60 Drainage Channel
- Railroad
- METRO Light Rail
- Overpass
- Underpass
- City of Mesa

COPYRIGHT © 1988, 2010 CITY OF MESA, ARIZONA

The City of Mesa assumes no responsibility arising from the use of this information. This map is provided without warranty of any kind, either expressed or implied.

The City of Mesa has published this map to aid cyclists and in no way warrants the safety of the bicycle facilities indicated on this map. Cyclists are urged to use facilities that are suitable for their individual cycling skills.



# MesaRides!





# Sharing the Road

## Biking on Streets



**Obey all traffic regulations.** Riding predictably and following the law are the keys to safe bicycling on Mesa streets. Knowing and following the rules help all road users properly anticipate and react to each other.

**Ride in a straight line.** Avoid weaving between parked cars. Ride in a straight line at least 4 feet away from parked cars to avoid the Door Zone (see below).

**Never ride against traffic.** Riding against traffic is dangerous and illegal. Motorists and pedestrians are not looking for cyclists riding the wrong way down a street.

**When necessary, use entire travel lane.** Move toward the center when the lane is too narrow for motorists to pass safely or when you're moving at the same speed as traffic.

**To cross an intersection, use the lane farthest to the right that points to where you are going.** Follow lane markings to cross an intersection. If you can't change lanes to turn left, ride across the street to the other side and align your bike with traffic.

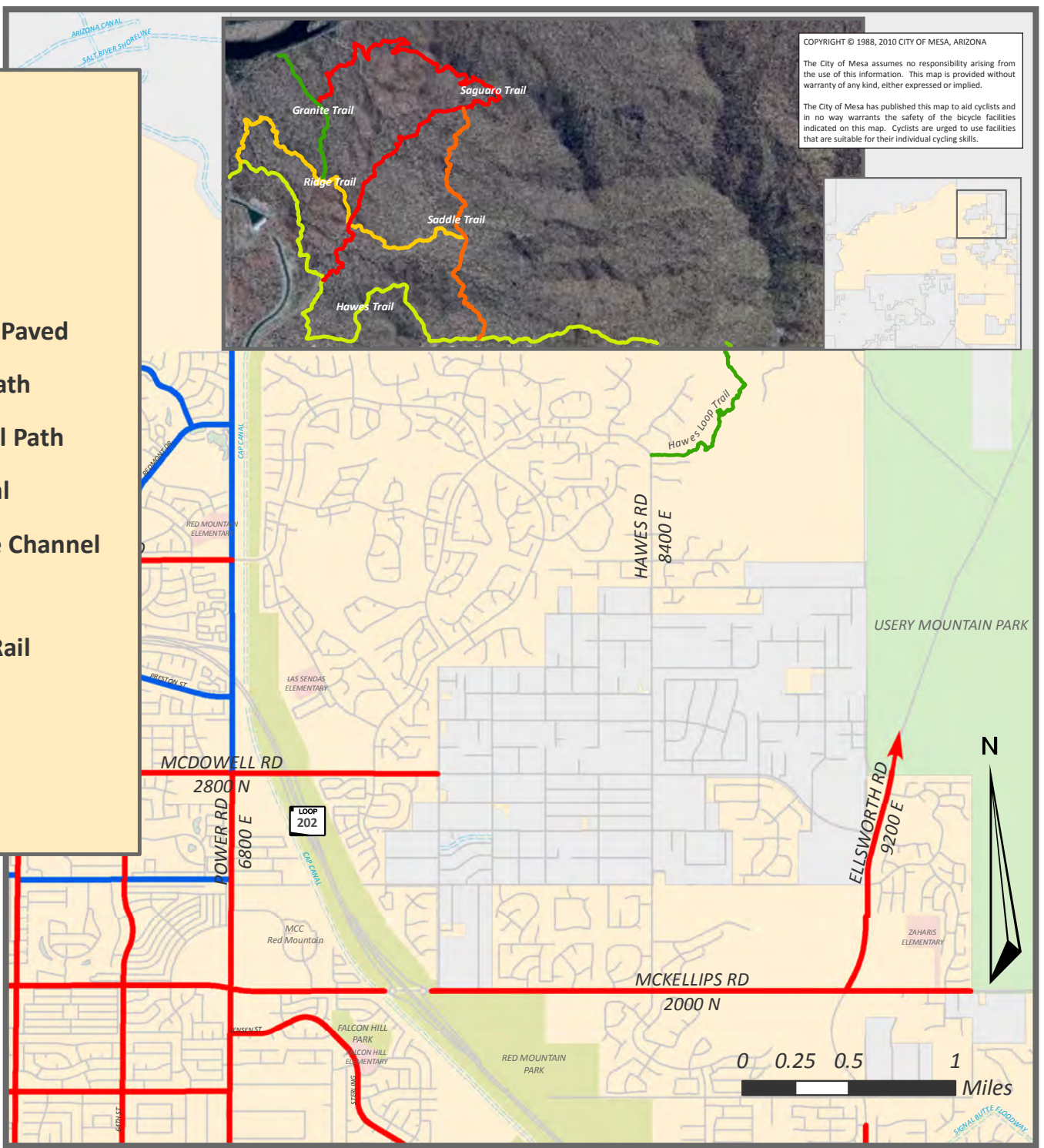
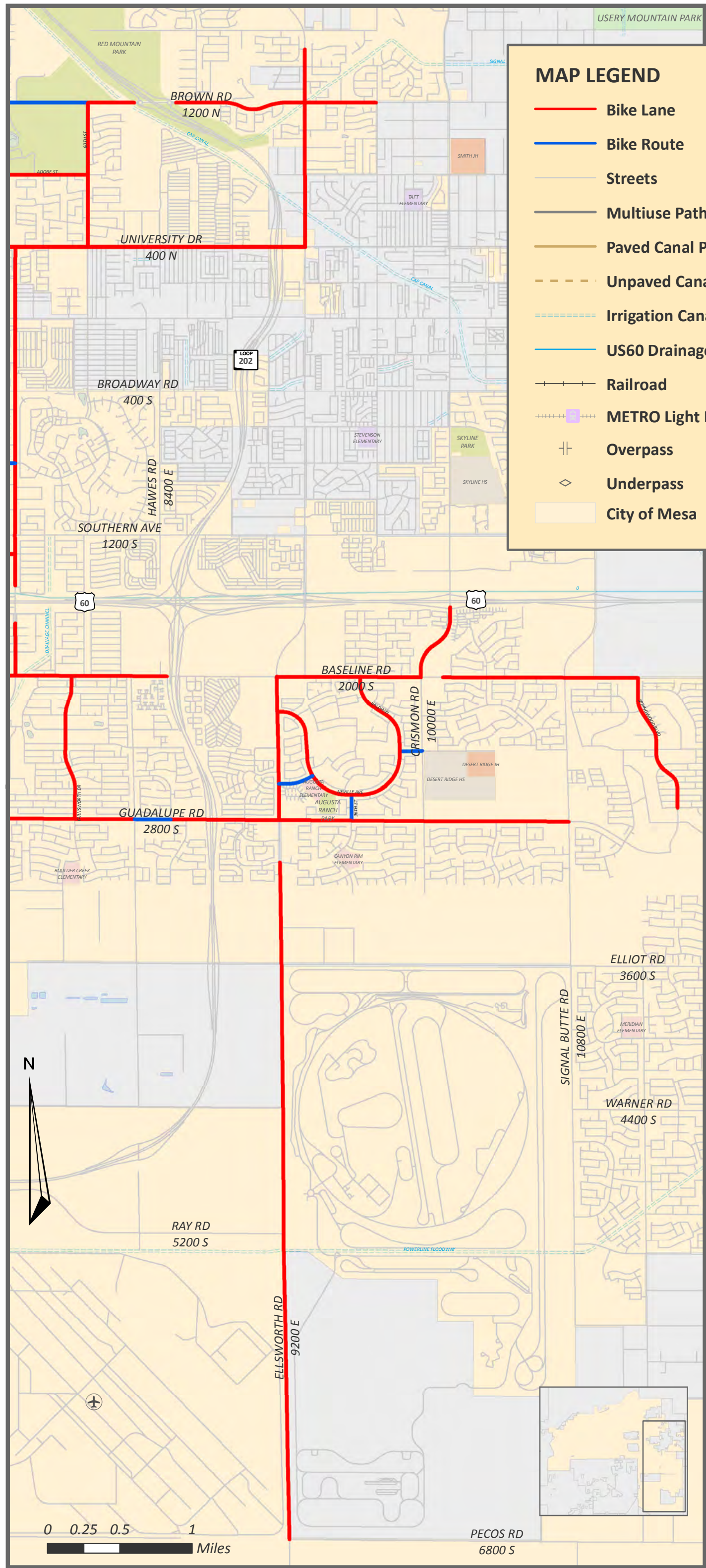
# The Door Zone

## Tips to Avoid Injuries

The Door Zone is the 4-foot area along the side of a parked car where an opening door can hit and seriously injure a cyclist.

**Look inside each parked car before you pass it.** If you're unable to see someone inside or you spot someone inside, move outside the Door Zone or slow down and pass carefully.

**Watch behind you.** Keep track of traffic behind you, so you'll know whether you have enough room if you must swerve suddenly out of the Door Zone. A mirror helps you see traffic behind you as you pedal forward.



## Types of Bikeways

### Bike Lanes

- Usually established on streets with lots of traffic.
- Special pavement markings and signs identify the lanes.

### Bike Routes

- Cars and bicycles share the lane.
- Bike routes are usually on streets that aren't wide enough for bike lanes but are good streets for biking.

### Multi-use Trails

- Paved paths separated from the road for bicyclists, walkers, runners, and in-line skaters (such as multiuse path).

- ### USEFUL WEBSITES
- CITY OF MESA ..... [www.mesaaz.gov](http://www.mesaaz.gov)
  - MARICOPA COUNTY ..... [www.mcdot.maricopa.gov](http://www.mcdot.maricopa.gov)
  - STATE OF ARIZONA ..... [www.dot.state.az.us](http://www.dot.state.az.us)
  - U.S. BUREAU OF LAND MANAGEMENT ..... [www.blm.gov](http://www.blm.gov)
  - U.S. FOREST SERVICE ..... [www.fs.fed.us/r3/tonto](http://www.fs.fed.us/r3/tonto)
  - ARIZONA BICYCLE CLUB ..... [www.azbikeclub.com](http://www.azbikeclub.com)
  - COALITION OF ARIZONA BICYCLIST ..... [www.cazbike.org](http://www.cazbike.org)
  - MOUNTAIN BIKING ASSOCIATION OF ARIZONA ..... [www.mbaa.net](http://www.mbaa.net)
  - LEAGUE OF AMERICAN BICYCLISTS ..... [www.bikeleague.org](http://www.bikeleague.org)
  - ASSOCIATION OF PED & BIKE PROFESSIONALS ..... [www.apbp.org](http://www.apbp.org)
  - USA CYCLING ..... [www.usacycling.org](http://www.usacycling.org)
  - PED AND BIKE INFORMATION CENTER ..... [www.bicyclinginfo.org](http://www.bicyclinginfo.org)
  - SAFE KIDS COALITION OF MARICOPA COUNTY ..... [www.safekidsmaricopa.org](http://www.safekidsmaricopa.org)
  - SAFE ROUTES TO SCHOOL ..... [www.dot.state.az.us](http://www.dot.state.az.us)
- ### THE ARIZONA REVISED STATUTES
- TITLE 28 - TRANSPORTATION  
ARTICLE 11 - OPERATION OF BICYCLES
- 28-811 ... Parent and guardian responsibility; applicability of article
  - 28-812 ... Applicability of traffic laws to bicycle riders
  - 28-813 ... Riding on bicycles
  - 28-814 ... Clinging to vehicle
  - 28-815 ... Riding on roadway and bicycle path; bicycle path usage
  - 28-816 ... Carrying article on bicycle
  - 28-817 ... Bicycle equipment
  - 28-818 ... Bicycle safety fund
- <http://www.azleg.state.az.us/ArizonaRevisedStatutes.asp>

## Bicycle Friendly Community

The League of American Bicyclists has elected Mesa as a Bicycle Friendly Community. For more information about the League of American Bicyclists visit [www.bikeleague.org](http://www.bikeleague.org).

### Theft Prevention

Most bike thefts are due to unlocked or improperly locked bikes. Following these tips will help prevent your bike from being stolen.

- Never leave your bike unlocked—not even for a second.
- Always use a high-quality U-lock or chain. For added security, use both.
- Always lock the frame and front wheel to either a rack or pole (see illustration 1).
- For extra security, remove the front wheel and lock it with the frame and rear wheel (see illustration 2).

Note: Some bike locks with cylindrical keys may be opened with a pen or similar object. Check with your local bike shop to determine the need to upgrade or replace your lock.



**YOUR COMMENTS...** Comments and ideas from bicyclists are an important source of information for improving Mesa's bikeway network. Please feel free to share your concerns with us relating to bicycle and pedestrian facilities, safety, and education to make bicycling and walking in Mesa even better.

Send your comments to:

CITY OF MESA  
TRANSPORTATION DEPARTMENT  
P.O. BOX 1466  
MESA, AZ 85211-1466

480.644.2160 Phone      480.644.3130 Fax

[www.mesaaz.gov](http://www.mesaaz.gov)

MesaRides!

Map Credit: Thanks to the City of Chicago for the use of information from their bike map.

### Communicate

Use hand signals so that drivers know where you're going. Signal all your turns and stops ahead of time. Also, before turning, look over your shoulder for any traffic. Check and only move when it's safe.

Make eye contact. Confirming eye contact with motorists helps them know that you're on the road.

See, be seen, be heard. Use lights at night or when visibility is poor. A white headlight and rear red reflector are required by law. Flashing lights are especially effective. Use bike reflectors, reflective clothing and a bell.

Never use earphones because you won't be able to hear what's going on around you. Using earphones is very dangerous.